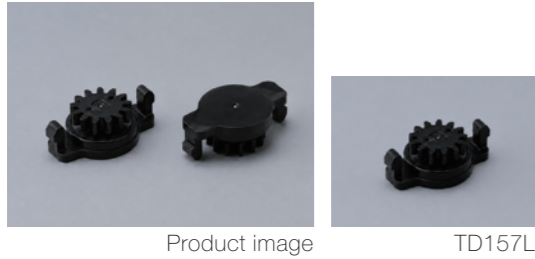


Product lineup



Product image TD157L

Product name	Torque [mN·m] (lbf·in)	Damping direction	Free-running torque [mN·m] (lbf·in)
TD157L1-140	14.0 (0.12)	CCW	0.5 (0.004) or less
TD157L1-210	21.0 (0.19)		

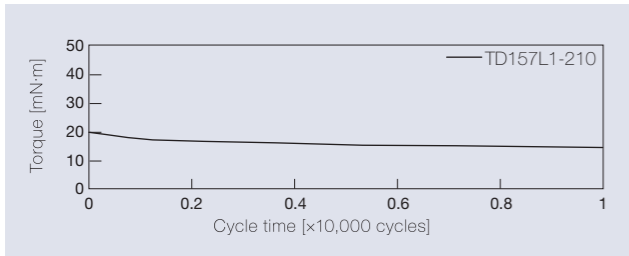
The torque of all rotary dampers is measured at a rotational speed of 20 min⁻¹.

Features

- Easy-to-install damper with snap-fit mounting
- High design flexibility allows installation in any orientation (horizontal, vertical, or angled)
- Tool-free installation
- Facilitates easy centering during installation
- One-way rotary damper
- Low free-running torque
- Outer mounting diameter of Ø14.9 mm (Compact and slim design)

Product specifications

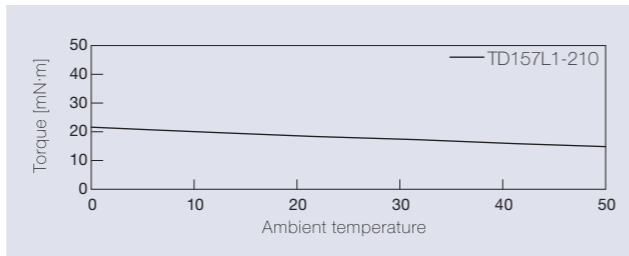
Durability



Measurement of torque at a rotation speed of 20 min⁻¹.

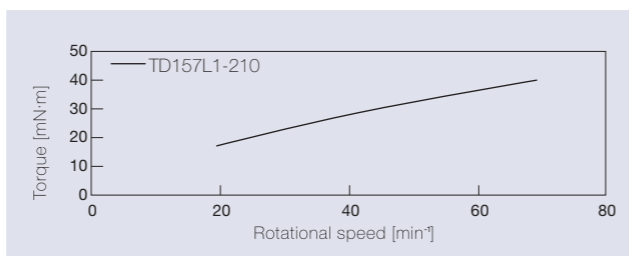
Test method	CCW & CW rotation test
Operation mode (1 cycle)	CCW/12 revolution → (1s stop) → CW/12 revolution → (1s stop)
Rotation speed	500 min ⁻¹
Rotation frequency	One rotation each in the CW and CCW directions
Durability	10,000 cycles

Temperature characteristics



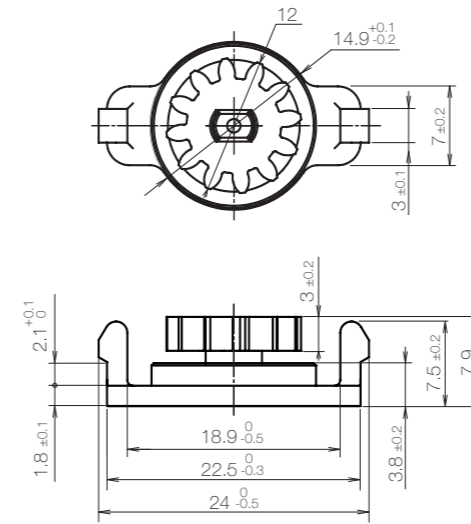
The torque measured at a rotational speed of 20 min⁻¹ at the specified ambient temperature is shown below.

Speed characteristics



Product information

[mm]



Gear specifications

Type	Standard spur gear
Tooth profile	Involute and full depth tooth
Module	0.8
Pressure angle	20°
Number of teeth	13
P.C.D.[mm]	Ø 10.4
Addendum modification	-
Base tangent length / Number of teeth	3.68/2

Main materials

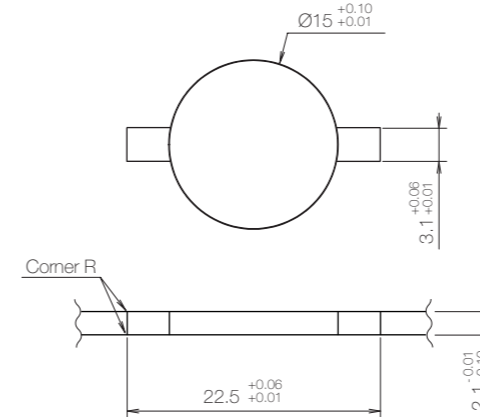
Housing	Plastic (POM)
Shaft	Plastic (POM)
Gear	Plastic (POM)
Cover	Stainless steel (SUS)

* General tolerance: ±0.3

* Product weight: Approx. 1.5 g

Dimensions related to mounting

[mm]

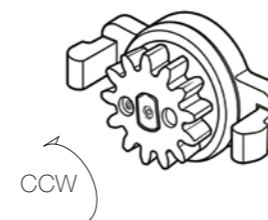


Recommended Corner R Shapes

- Insertion side: Apply an R-chamfer
- Locking side: Small R recommended (R0.2)

Damping directions

Rotation directions of the shaft to which torque is applied



* Housing fixed / Shaft (Gear) rotates

Damping direction	Printed mark
CCW	L