

Product lineup



Product image



TD58(G-L)



TD58W



TD58W(G-L)

Features

- Highest torque among our continuous rotation dampers
- Outer mounting diameter of $\varnothing 31$ mm
- Facilitates easy centering during mounting
- A wide variety of torques
- Best-selling continuous rotation

Product name	Torque [N·m] (lbf·in)	Damping direction	Cap color
TD58R1-3K	0.3 ± 0.06 (2.66 \pm 0.53)	CW	Dark gray
TD58R1-5K	0.5 ± 0.10 (4.43 \pm 0.89)		
TD58R1-8K	0.8 ± 0.16 (7.08 \pm 1.42)		
TD58R1-16K	1.6 ± 0.32 (14.16 \pm 2.83)		

Product name	Torque [N·m] (lbf·in)	Damping direction	Cap color
TD58L1-3K	0.3 ± 0.06 (2.66 \pm 0.53)	CCW	Gray
TD58L1-5K	0.5 ± 0.10 (4.43 \pm 0.89)		
TD58L1-8K	0.8 ± 0.16 (7.08 \pm 1.42)		
TD58L1-16K	1.6 ± 0.32 (14.16 \pm 2.83)		

The torque of all rotary dampers is measured at a rotational speed of 30 min⁻¹.

The products without gear have "(G-L)" at the end of the product name.

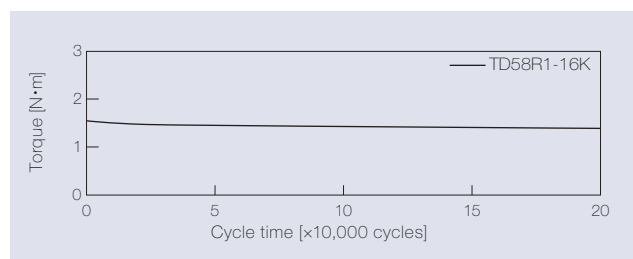
Bidirectional type products have "W" instead of "R" (or "L") in their names.

If this product's gears are used in applications where they repeatedly engage and disengage with mating gears (such as rack gears or sector gears), conventional plastic gears may be prone to tooth chipping.

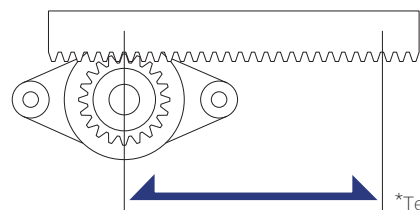
For applications where the gears do not remain constantly meshed, we also offer sintered gears, so please contact us for more information.

Product specifications

Durability



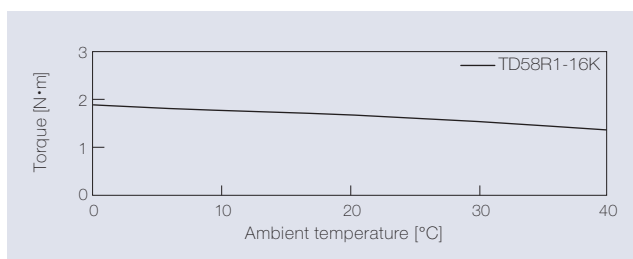
Measurement of torque at a rotation speed of 30 min⁻¹



*Test conducting image

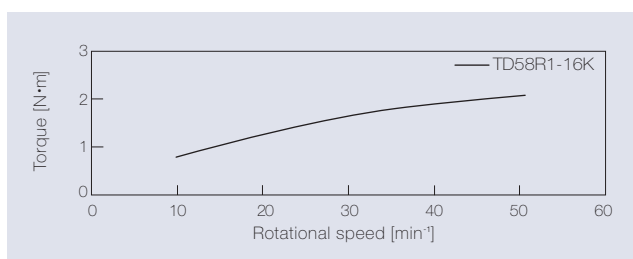
Test method	Rack-and-pinion
Travel speed	28 mm / sec
Pinion rotation speed	30 min ⁻¹
Damper rotation frequency	One rotation in the CW and CCW directions, respectively
Durability	200,000 cycles

Temperature characteristics



The torque achieved during rotation at 30 min⁻¹ in the designated ambient temperature is shown.

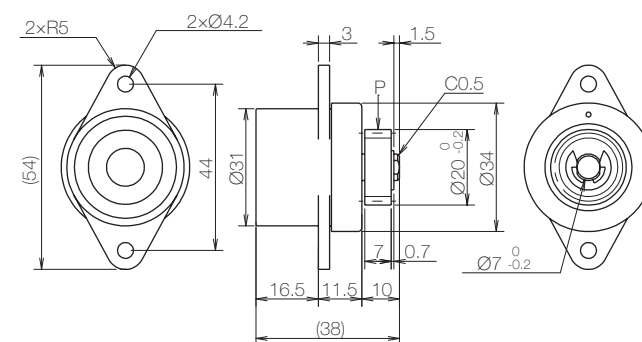
Speed characteristics



Product information

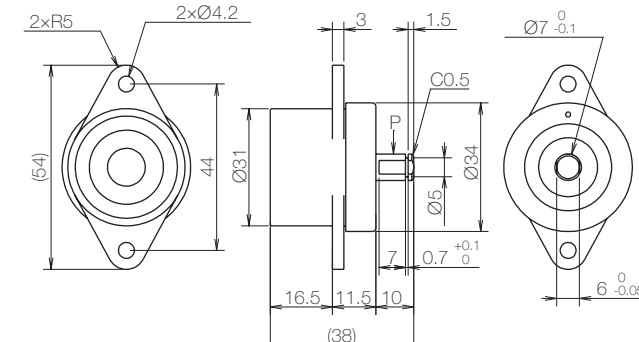
TD58

[mm]



TD58(G-L)

[mm]



* General tolerance: ± 0.3

Gear specifications

Type	Standard spur gear
Tooth profile	Involute and full depth tooth
Module	1
Pressure angle	20°
Number of teeth	18
P.C.D[mm]	$\varnothing 18$
Addendum modification	—
Base tangent length / Number	7.63 / 3

- Product weight: Approx. 42 g (With gear)

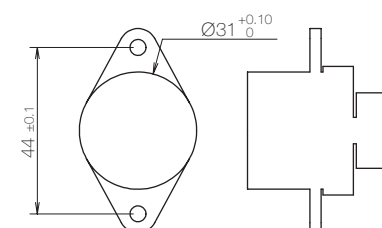
- Allowable radial load (P): 13.4 N

Main materials

Housing	Plastic (POM)
Cap	Plastic (POM)
Gear	Plastic (POM)
Shaft	CW CCW Bidirectional
	Hardening steel (Electroless nickel-plated) Zinc alloy (ZDC)

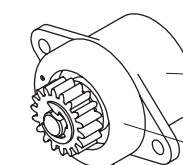
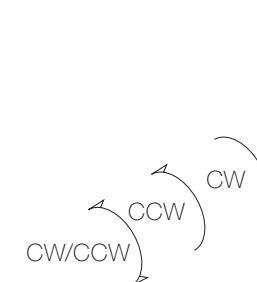
Dimensions related to mounting

[mm]



Damping directions

Damping direction of the shaft



Damping direction	Printed mark
CW	R
CCW	L
Bidirectional	W

Damping direction	Cap color
CW	Dark gray
CCW	Gray
Bidirectional	Dark gray