

## Product lineup



Product image



TD159A



TD159A-AT



TD159A(CM)



TD159A(CM)-AT

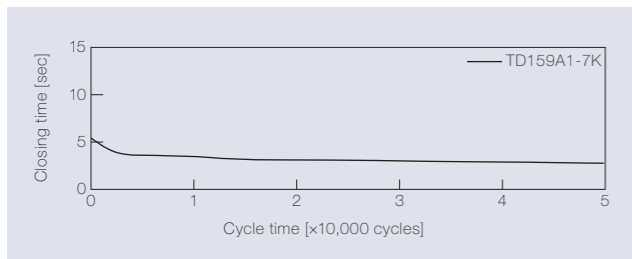
Product name	Torque [N·m] (lb·in)	Damping direction
TD159A1-7K	0.7N·m(6.2lb·in)	CW
TD159A1-7K-AT		
TD159A1-7K(CM)		
TD159A1-7K(CM)-AT		

## Features

- Anti-rust type with chromate treatment is also available (CM-Type)
- Larger opening angle (280 degrees)
- The most popular damper design
- Using the attachment, the form of TD154 will be the same as TD99 (AT-Type)

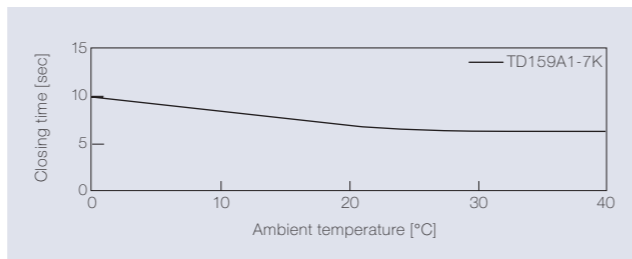
## Product specifications

### Durability



Torque	0.7N·m (6.2lb·in)
Radial load	N/A
Angle range of closing time	280 to 0 deg.
Temperature	23 ± 2°C (73.4 ± 35.6°F)
Durability	50,000 cycles

### Temperature characteristics



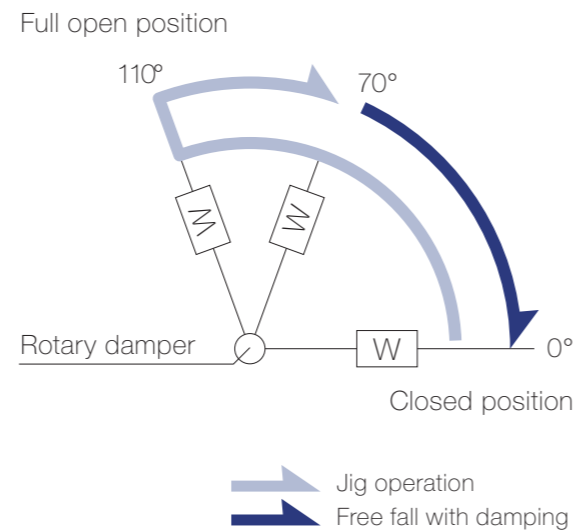
Measured according to the performance management testing method shown below after leaving in each designated ambient temperature for over one hour.

### Performance management testing method

As the torque of partial rotation angle dampers is not consistent, the closing time measurement jig is used for the performance tests.

[Operation during measurement]  
(Secures the housing of a rotary damper and moves its shaft)  
All rotary dampers are managed by the following closing time test.

Test mode [ 110° → 70° (Pause) → (Free fall with damping) → 0° ]  
\* Horizontal plane: 0°

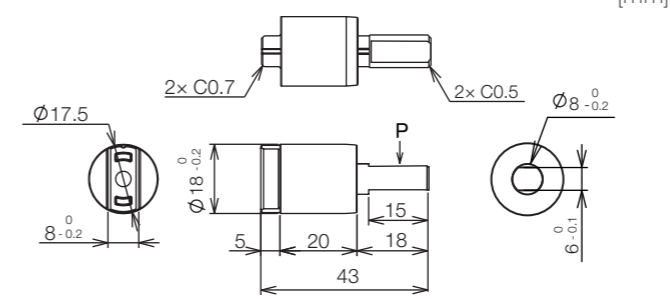


### Inspection specification before shipping

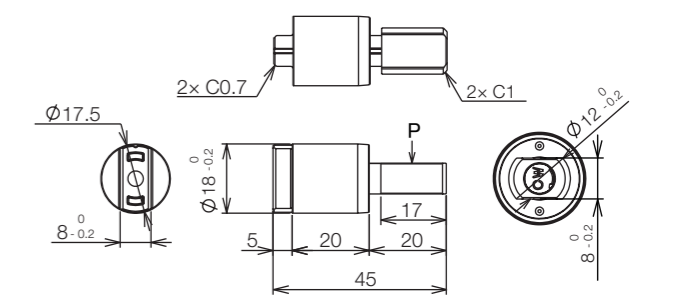
Type	Preset torque [N·m] (lb·in)	Closing time
7K	0.7 (6.2)	3 to 12 sec

## Product information

TD159A1-7K



TD159A1-7K-AT



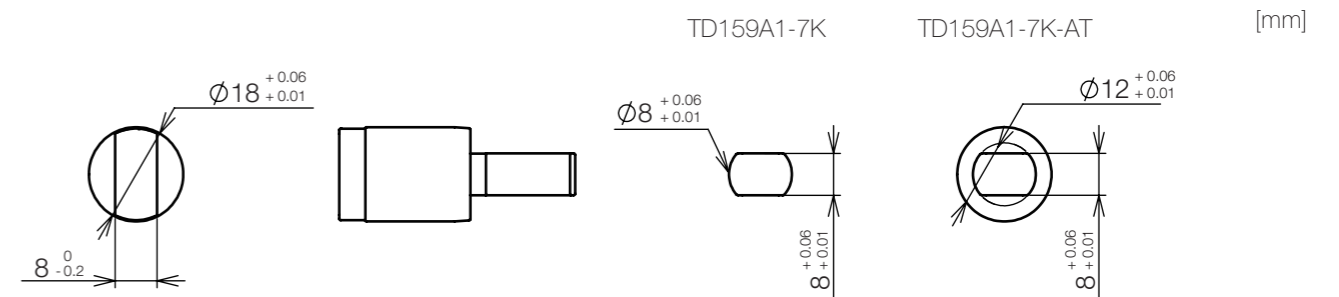
\* General tolerance: ±0.3

### Main materials

Housing	Plastic (ZDC)
Cap	Plastic (ZDC)
Shaft	Plastic (ZDC)

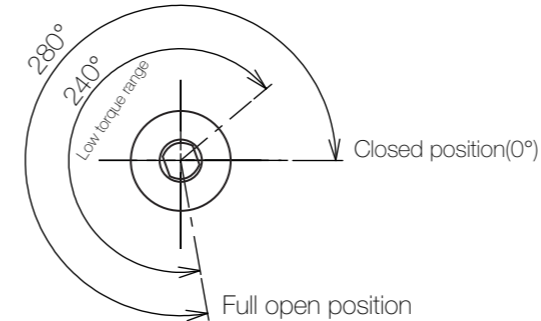
- Opening angle: 280°
- Product weight: Approx. 30 g
- Allowable radial load (P): 29.4 N

## Dimensions related to mounting

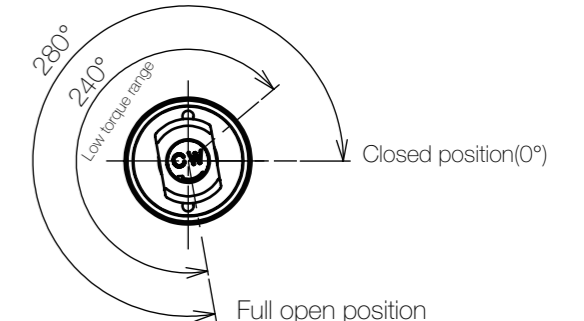


## Opening angle

TD159A



TD159A-AT



\* Shaft position at the time of shipping: Closed position

## Damping directions

### Rotation directions of the shaft to which torque is applied

