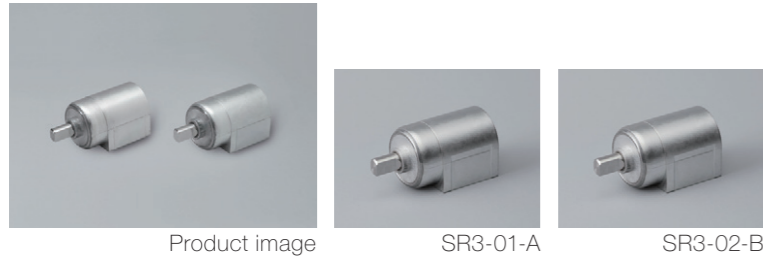


Product lineup



Features

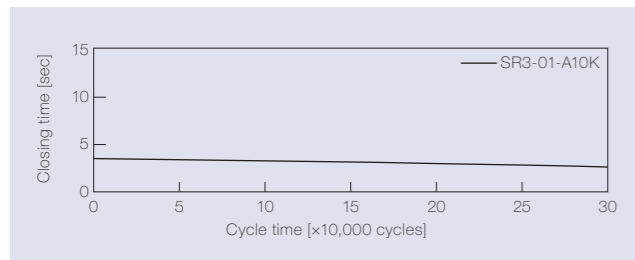
- Automatic torque adjustment (Applicable to 1 N·m or smaller)
- Small variation in closing time
- Durable for 300,000 cycles

Product name	Torque [N·m] (lb·in)	Damping direction
SR3-01-A10K	1.0 (8.85)	CW

Product name	Torque [N·m] (lb·in)	Damping direction
SR3-02-B10K	1.0 (8.85)	CCW

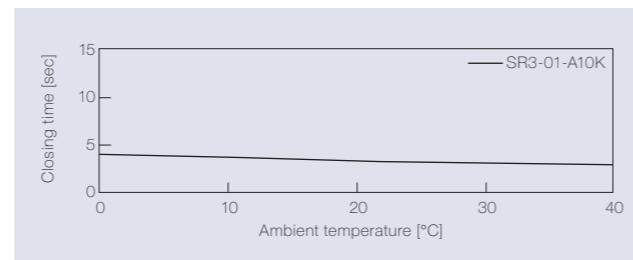
Product specifications

Durability



Torque	1.0 N·m (8.85 lb·in)
Radial load	N/A
Angle range of closing time	70 to 0 deg.
Temperature	23 ± 2°C (73.4 ± 35.6°F)
Durability	300,000 cycles

Temperature characteristics



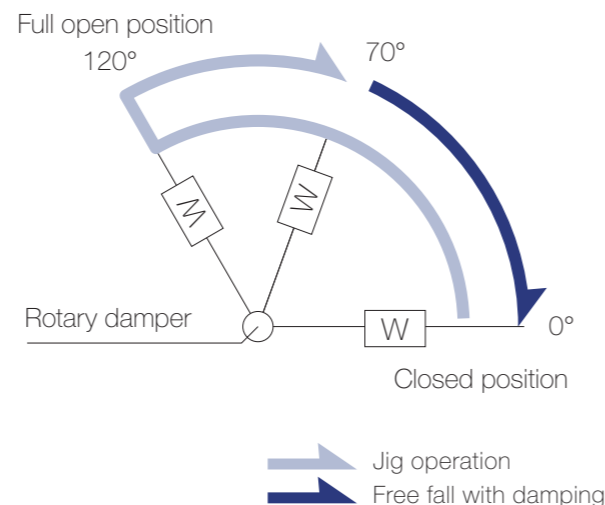
Measured according to the performance management testing method shown below after leaving in each designated ambient temperature for over one hour.

Performance management testing method

As the torque of partial rotation angle dampers is not consistent, the closing time measurement jig is used for the performance tests.

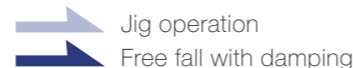
[Operation during measurement]  
 (Secures the housing of a rotary damper and moves its shaft)  
 All rotary dampers are managed by the following closing time test.

Test mode [120° → 70° (Pause) → (Free fall with damping) → 0°]  
 \* Horizontal plane: 0°

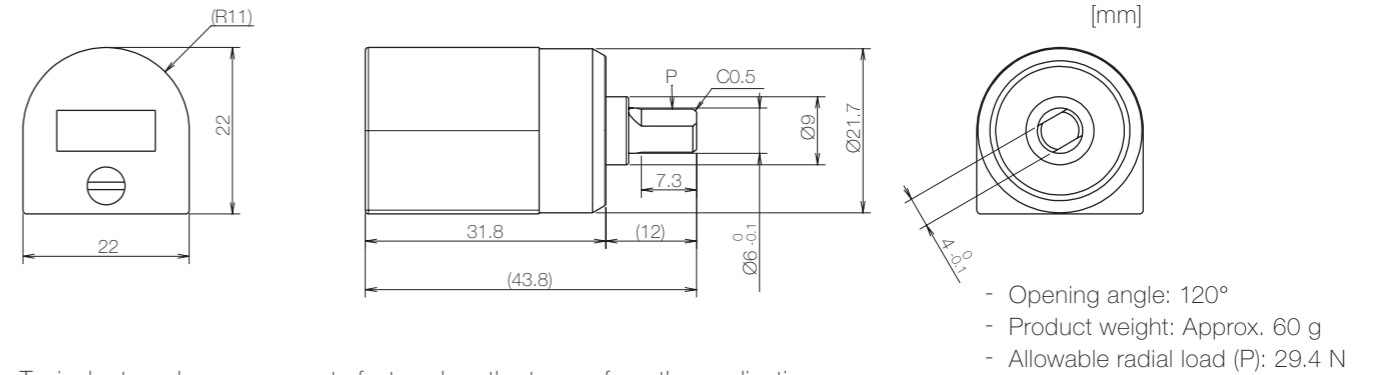


Inspection specification before shipping

Type	Preset torque [N·m] (lb·in)	Closing time
10K	1.0 (8.85)	1.5 to 6 sec



Product information



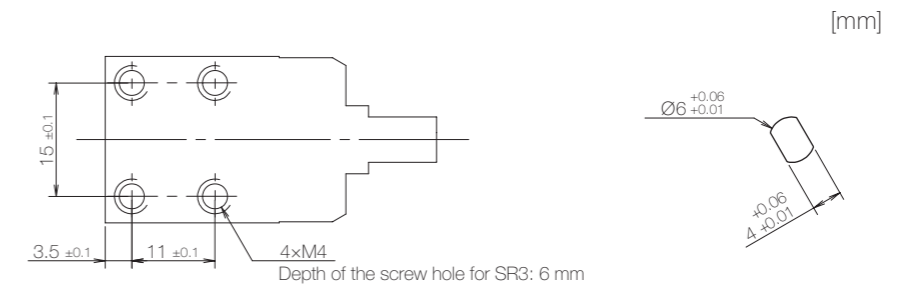
Typical rotary dampers operate faster when the torque from the application is higher than the preset torque and slower when the torque from the application is lower than the preset torque. However, SR3 maintains a constant damping speed through automatic torque adjustment.

Main materials

Housing	Zinc alloy (ZDC)
Cap	Zinc alloy (ZDC)
Shaft	Stainless steel (SUS)
Screw	Zinc alloy (ZDC)

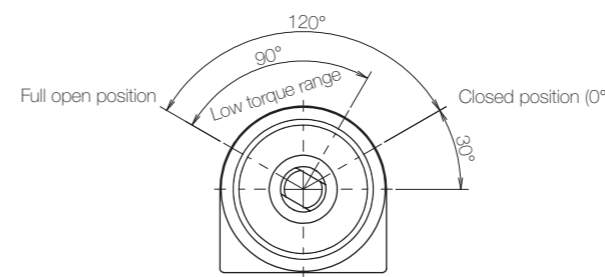
\* General tolerance: ±0.2

Dimensions related to mounting

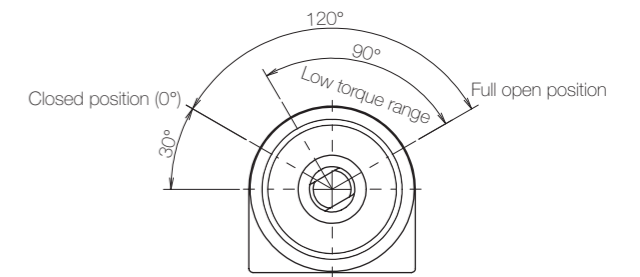


Opening angle

SR3-01-A



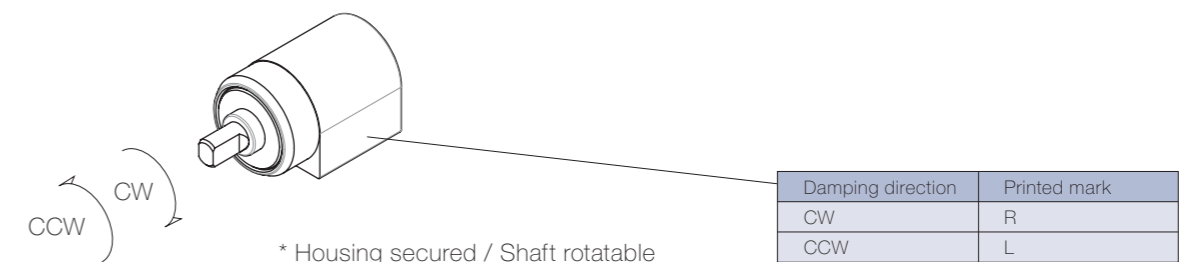
SR3-02-B



\* Shaft position at the time of shipping: Closed position

Damping directions

Rotation directions of the shaft to which torque is applied



Damping direction	Printed mark
CW	R
CCW	L

\* Housing secured / Shaft rotatable