

# TD154 Horizontal use

RoHS compliant

## Product lineup



Product image

TD154A

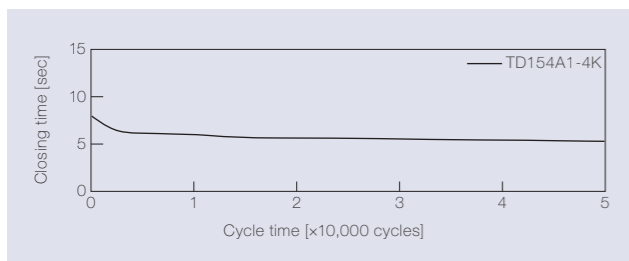
### Features

- Made with chemical-resistant PBT plastic is used
- Larger opening angle (290 degrees)
- The most popular damper design
- TD99 series is identifiable by the shaft color
- 0.5 N · m can be made as prototype

Product name	Torque [N·m](lb·in)	Damping direction	Shaft color
TD154A1 - 4K	0.4 (3.54)	CW	Light purple

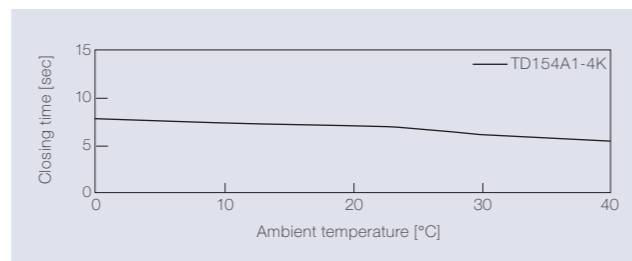
## Product specifications

### Durability



Torque	0.4 N·m (3.54 lb·in)
Radial load	N/A
Angle range of closing time	70 to 0 deg.
Temperature	23 ± 2°C (73.4 ± 35.6°F)
Durability	50,000 cycles

### Temperature characteristics



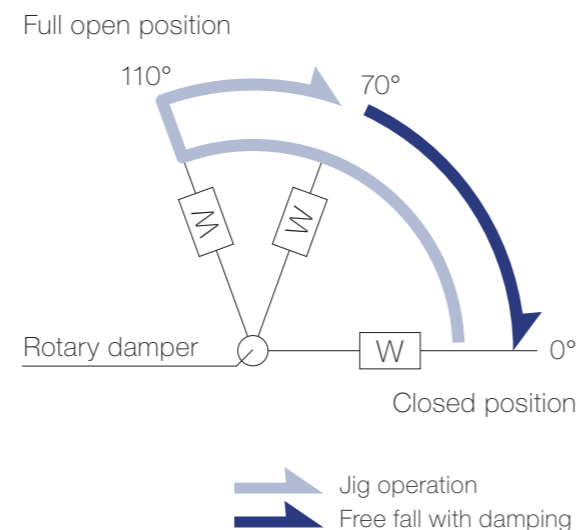
Measured according to the performance management testing method shown below after leaving in each designated ambient temperature for over one hour.

### Performance management testing method

As the torque of partial rotation angle dampers is not consistent, the closing time measurement jig is used for the performance tests.

[Operation during measurement]  
(Secures the housing of a rotary damper and moves its shaft)  
All rotary dampers are managed by the following closing time test.

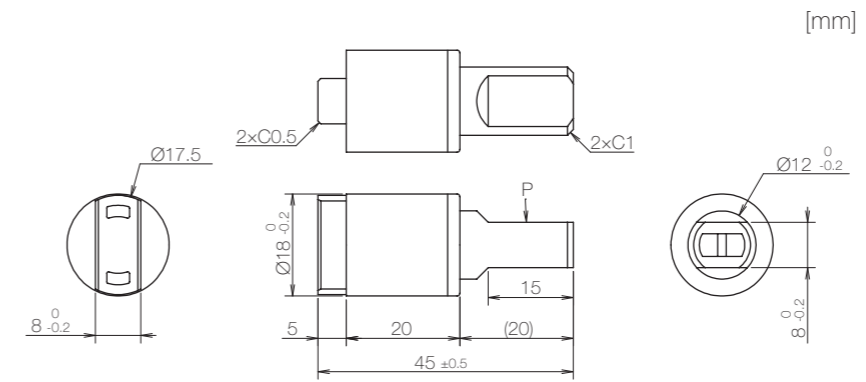
Test mode [ 110° → 70° (Pause) → (Free fall with damping) → 0° ]  
\* Horizontal plane: 0°



### Inspection specification before shipping

Type	Preset torque [N·m](lb·in)	Closing time
4K	0.4 (3.54)	3 to 12 sec

## Product information



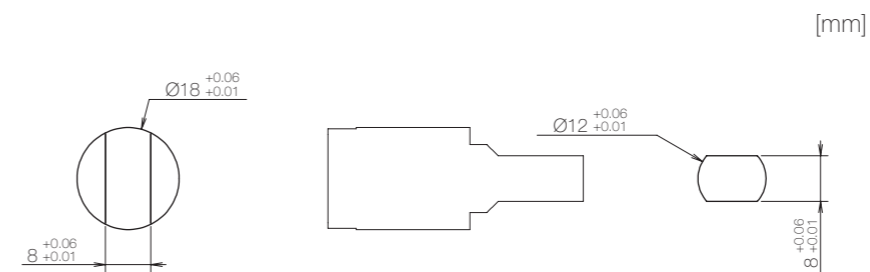
\* General tolerance:  $\pm 0.3$

- Opening angle: 290°
- Product weight: Approx. 10 g
- Allowable radial load(P): 29.4 N

### Main materials

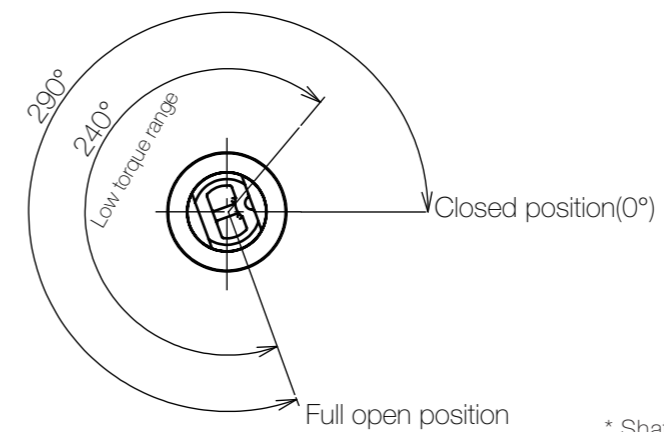
Housing	Plastic (PBT)
Cap	Plastic (PBT)
Shaft	Plastic (PBT)

## Dimensions related to mounting



## Opening angle

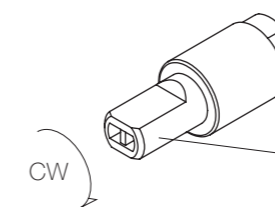
### TD154A



\* Shaft position at the time of shipping: Closed position

## Damping directions

### Rotation directions of the shaft to which torque is applied



\* Housing secured / Shaft rotatable

Damping direction	Shaft color
CW	Light purple