

Product lineup



Product image



TD88(G-L)

Features

- Outer mounting diameter of \varnothing 15 mm
- One direction rotary damper
- Facilitates easy centering during mounting
- High durability

Product name	Torque [mN·m] (lbf·in)	Damping direction	Cap color
TD88R1-100	10.0 \pm 5 (0.09 \pm 0.04)	CW	Dark gray
TD88R1-200	20.0 \pm 8 (0.18 \pm 0.07)		
TD88R1-300	30.0 \pm 9 (0.27 \pm 0.08)		
TD88R1-400	40.0 \pm 10 (0.35 \pm 0.09)		

Product name	Torque [mN·m] (lbf·in)	Damping direction	Cap color
TD88L1-100	10.0 \pm 5 (0.09 \pm 0.04)	CCW	Gray
TD88L1-200	20.0 \pm 8 (0.18 \pm 0.07)		
TD88L1-300	30.0 \pm 9 (0.27 \pm 0.08)		
TD88L1-400	40.0 \pm 10 (0.35 \pm 0.09)		

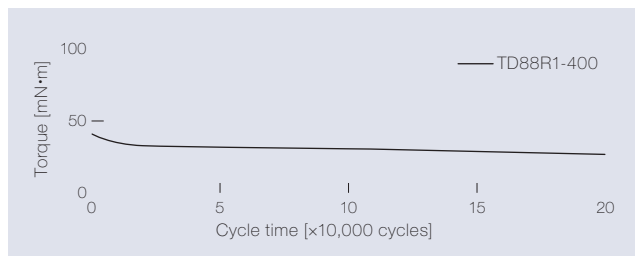
The torque of all rotary dampers is measured at a rotational speed of 30 min⁻¹.

The products without gear have "(G-L)" at the end of the product name.

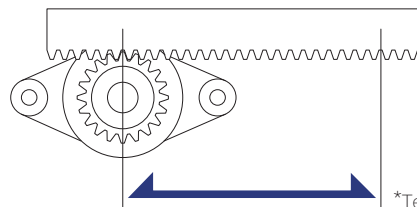
Bidirectional TD88 rotary dampers are not available.

Product specifications

Durability



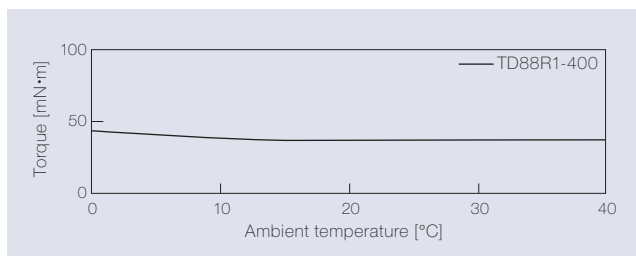
Measurement of torque at a rotation speed of 30 min⁻¹



*Test conducting image

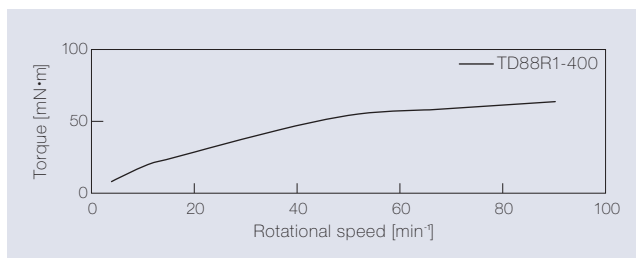
Test method	Rack-and-pinion
Travel speed	14 mm / sec
Pinion rotation speed	30 min ⁻¹
Damper rotation frequency	One rotation in the CW and CCW directions, respectively
Durability	200,000 cycles

Temperature characteristics



The torque achieved during rotation at 30 min⁻¹ in the designated ambient temperature is shown.

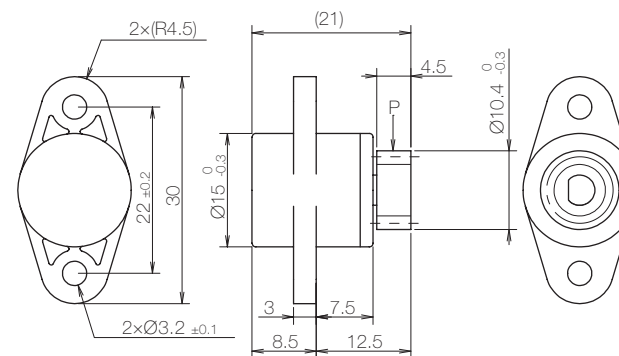
Speed characteristics



Product information

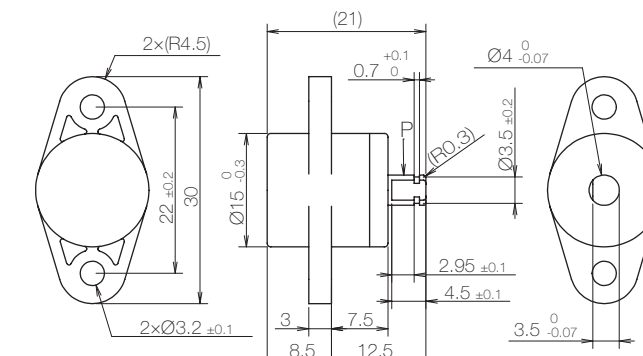
TD88

[mm]



TD88(G-L)

[mm]



* General tolerance: \pm 0.3

Gear specifications

Type	Standard spur gear
Tooth profile	Involute and full depth tooth
Module	0.8
Pressure angle	20°
Number of teeth	11
P.C.D[mm]	\varnothing 8.8
Addendum modification	—
Base tangent length / Number	3.67 / 2

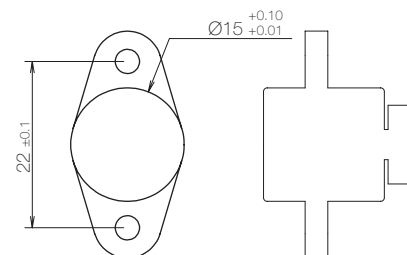
- Product weight: Approx. 7 g (With gear)
- Allowable radial load (P): 5.0 N

Main materials

Housing	Plastic (PC)
Cap	Plastic (PC)
Gear	Plastic (POM)
Shaft	Stainless steel (SUS)

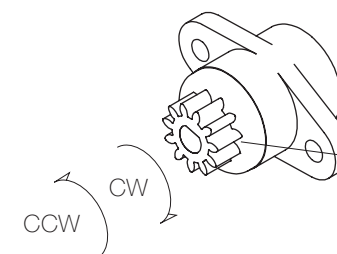
Dimensions related to mounting

[mm]



Damping directions

Damping direction of the shaft



Damping direction	Cap color
CW	Dark gray
CCW	Gray