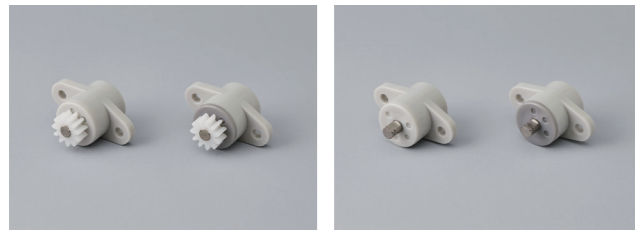


## Product lineup



Product image

TD88(G-L)

### Features

- Outer mounting diameter of  $\varnothing 15$  mm
- One direction rotary damper
- Facilitates easy centering during mounting
- High durability

Product name	Torque [mN·m] (lbf·in)	Damping direction	Cap color
TD88R1-100	10.0 ± 5 (0.09 ± 0.04)	CW	Dark gray
TD88R1-200	20.0 ± 8 (0.18 ± 0.07)		
TD88R1-300	30.0 ± 9 (0.27 ± 0.08)		
TD88R1-400	40.0 ± 10 (0.35 ± 0.09)		

Product name	Torque [mN·m] (lbf·in)	Damping direction	Cap color
TD88L1-100	10.0 ± 5 (0.09 ± 0.04)	CCW	Gray
TD88L1-200	20.0 ± 8 (0.18 ± 0.07)		
TD88L1-300	30.0 ± 9 (0.27 ± 0.08)		
TD88L1-400	40.0 ± 10 (0.35 ± 0.09)		

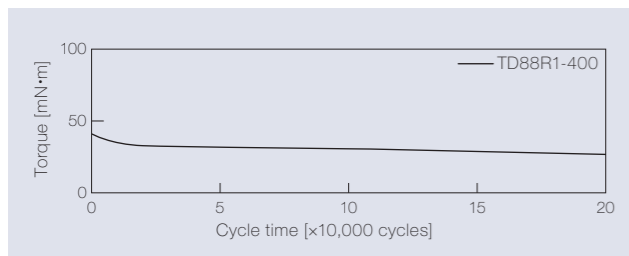
The torque of all rotary dampers is measured at a rotational speed of 30 min<sup>-1</sup>.

The products without gear have "(G-L)" at the end of the product name.

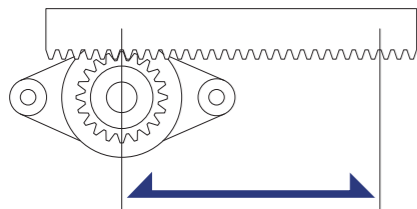
Bidirectional TD88 rotary dampers are not available.

## Product specifications

### Durability

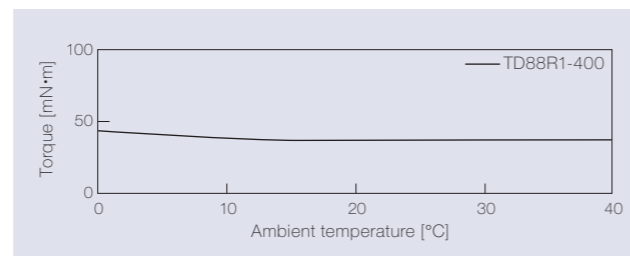


Measurement of torque at a rotation speed of 30 min<sup>-1</sup>



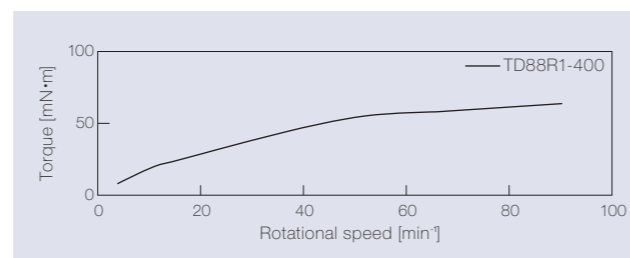
Test method	Rack-and-pinion
Travel speed	14 mm / sec
Pinion rotation speed	30 min <sup>-1</sup>
Damper rotation frequency	One rotation in the CW and CCW directions, respectively
Durability	200,000 cycles

### Temperature characteristics



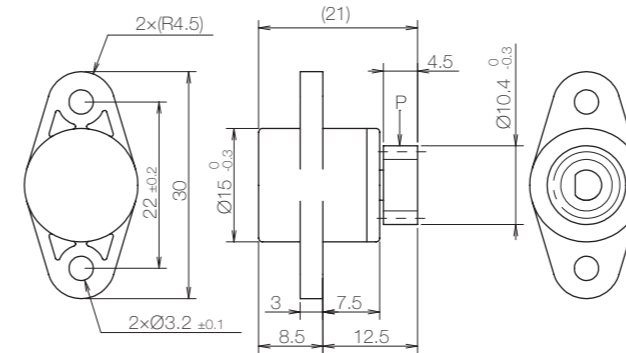
The torque achieved during rotation at 30 min<sup>-1</sup> in the designated ambient temperature is shown.

### Speed characteristics

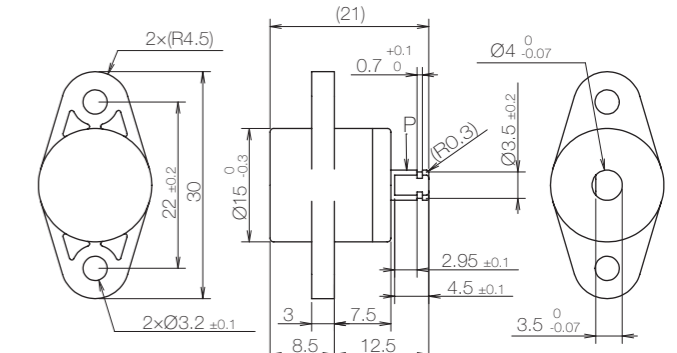


## Product information

### TD88 [mm]



### TD88(G-L) [mm]



\* General tolerance: ±0.3

### Gear specifications

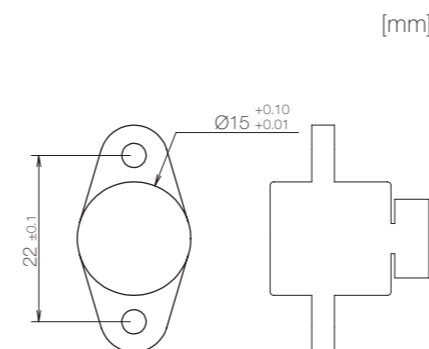
Type	Standard spur gear
Tooth profile	Involute and full depth tooth
Module	0.8
Pressure angle	20°
Number of teeth	11
P.C.D[mm]	$\varnothing 8.8$
Addendum modification	-
Base tangent length / Number	3.67 / 2

- Product weight: Approx. 7 g (With gear)
- Allowable radial load (P): 5.0 N

### Main materials

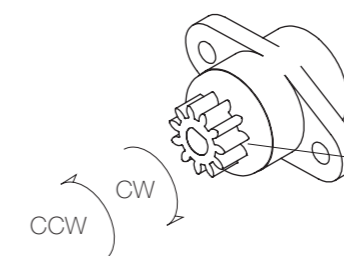
Housing	Plastic (PC)
Cap	Plastic (PC)
Gear	Plastic (POM)
Shaft	Stainless steel (SUS)

## Dimensions related to mounting



## Damping directions

### Damping direction of the shaft



Damping direction	Cap color
CW	Dark gray
CCW	Gray