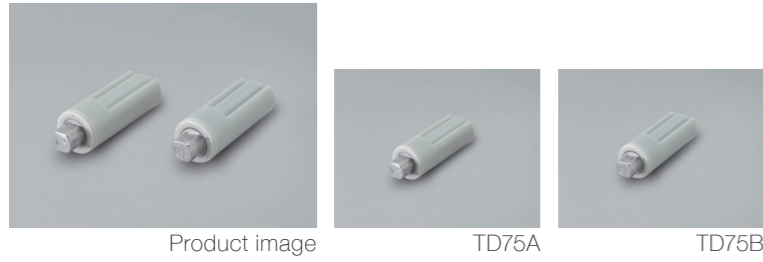


Product lineup



Features

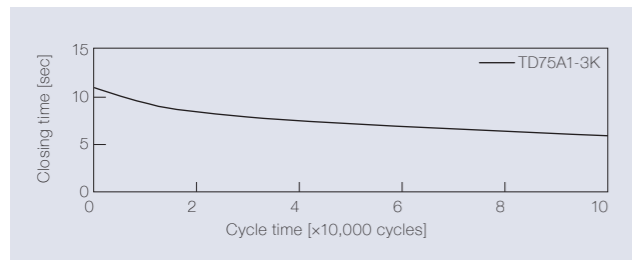
- The smallest vertical use damper (Ø 11 mm)
- Allowable opening angle of 180°
- Durable for 100,000 cycles

Product name	Torque [N·m] (lbf·in)	Damping direction
TD75A1-1K	0.10 (0.89)	CW
TD75A1-2K	0.20 (1.77)	
TD75A1-3K	0.29 (2.57)	

Product name	Torque [N·m] (lbf·in)	Damping direction
TD75B1-1K	0.10 (0.89)	CCW
TD75B1-2K	0.20 (1.77)	
TD75B1-3K	0.29 (2.57)	

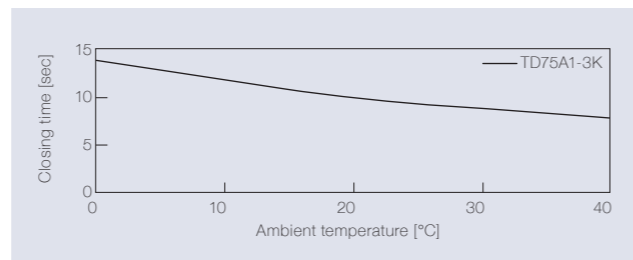
Product specifications

Durability



Torque	0.29 N·m (2.57 lbf·in)
Radial load	N/A
Angle range of closing time	160 to 10 deg.
Temperature	23 ± 2°C (73.4 ± 35.6°F)
Durability	100,000 cycles

Temperature characteristics



Measured according to the performance management testing method shown below after leaving in each designated ambient temperature for over one hour.

Performance management testing method

As the torque of partial rotation angle dampers is not consistent, the closing time measurement jig is used for the performance tests.

[Operation during measurement]

(Secures the housing of a rotary damper and moves its shaft)

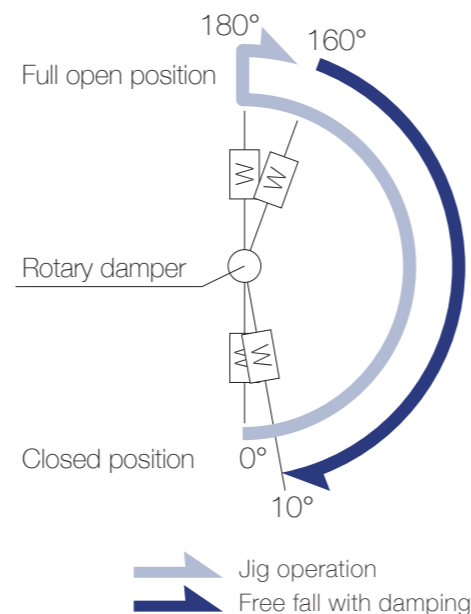
All rotary dampers are managed by the following closing time test.

Test mode [180° → 160° (Pause) → (Free fall with damping) → 10°]

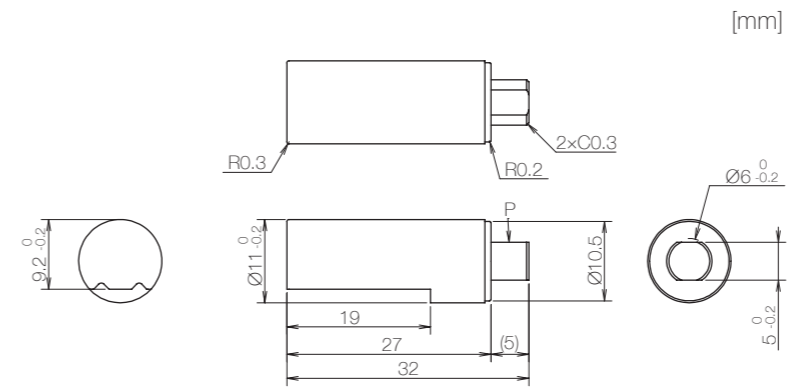
* Horizontal plane: 90°

Inspection specification before shipping

Type	Preset torque [N·m] (lbf·in)	Closing time
1K	0.10 (0.89)	5 to 15 sec
2K	0.20 (1.77)	
3K	0.29 (2.57)	



Product information



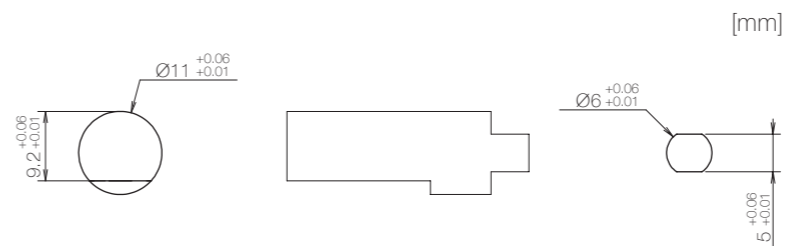
* General tolerance: ±0.3

- Opening angle: 180°
- Product weight: Approx. 7 g
- Allowable radial load (P): 29.4 N

Main materials

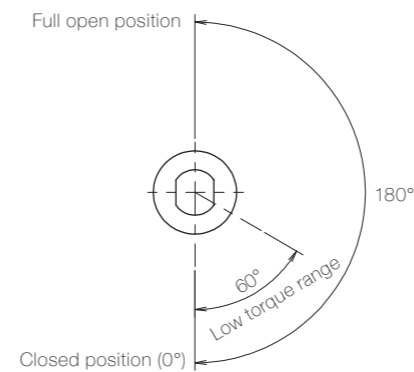
Housing	Plastic (POM)
Cap	Plastic (POM)
Shaft	Zinc alloy (ZDC)

Dimensions related to mounting

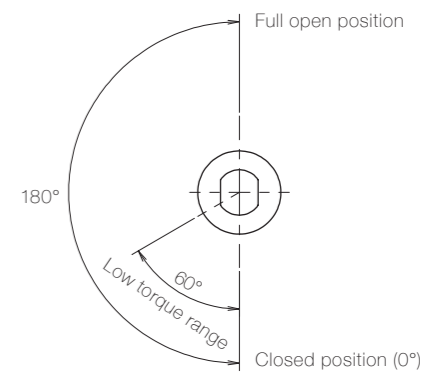


Opening angle

TD75A



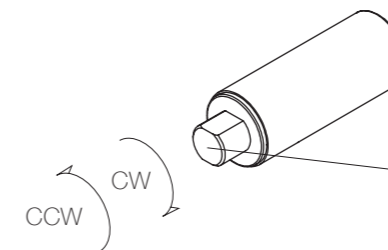
TD75B



* Shaft position at the time of shipping: Closed position

Damping directions

Rotation directions of the shaft to which torque is applied



* Housing secured / Shaft rotatable

Damping direction	Engraved mark
CW	CW
CCW	CCW