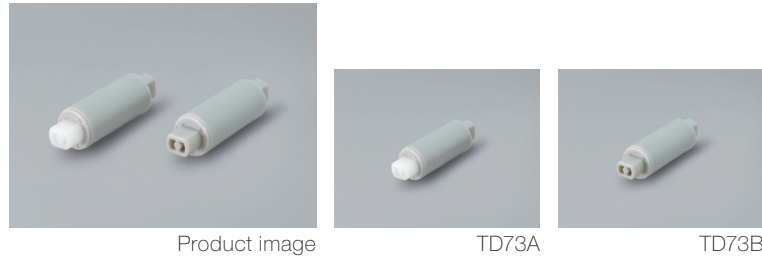


Product lineup



Features

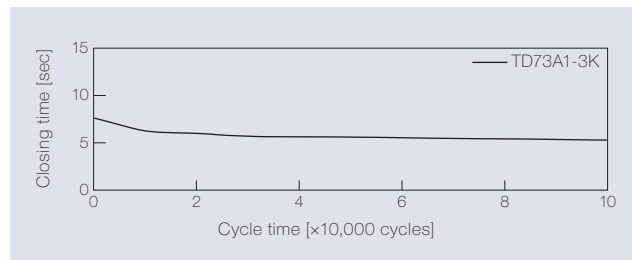
- The smallest horizontal use damper (Ø 11 mm)
- The form of the TD73 is symmetrical, so it can be inserted in either direction
- Gray color makes the product inconspicuous
- Best-selling products

| Product name | Torque [N·m] (lb·in) | Damping direction | Shaft color |
|--------------|----------------------|-------------------|-------------|
| TD73A1-0.5K | 0.05 (0.44) | CW | Natural |
| TD73A1-1K | 0.10 (0.89) | | |
| TD73A1-2K | 0.20 (1.77) | | |
| TD73A1-3K | 0.29 (2.57) | | |

| Product name | Torque [N·m] (lb·in) | Damping direction | Shaft color |
|--------------|----------------------|-------------------|-------------|
| TD73B1-0.8K | 0.08 (0.71) | CCW | Gray |
| TD73B1-1K | 0.10 (0.89) | | |
| TD73B1-2K | 0.20 (1.77) | | |
| TD73B1-3K | 0.29 (2.57) | | |

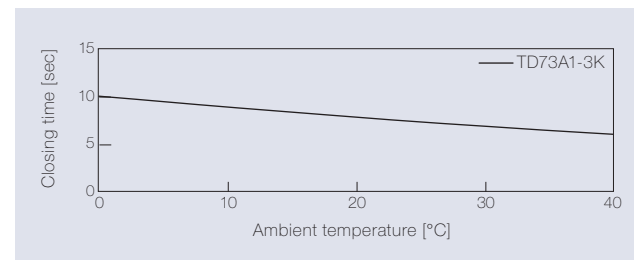
Product specifications

Durability



| | |
|-----------------------------|--------------------------|
| Torque | 0.29 N·m (2.57 lb·in) |
| Radial load | N/A |
| Angle range of closing time | 70 to 0 deg. |
| Temperature | 23 ± 2°C (73.4 ± 35.6°F) |
| Durability | 100,000 cycles |

Temperature characteristics



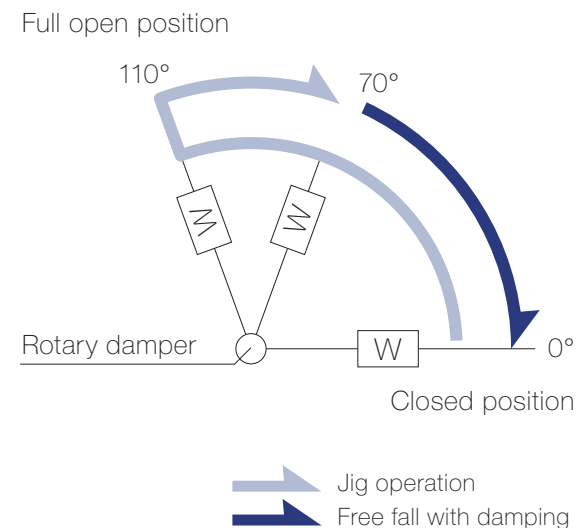
Measured according to the performance management testing method shown below after leaving in each designated ambient temperature for over one hour.

Performance management testing method

As the torque of partial rotation angle dampers is not consistent, the closing time measurement jig is used for the performance tests.

[Operation during measurement]
 (Secures the housing of a rotary damper and moves its shaft)
 All rotary dampers are managed by the following closing time test.

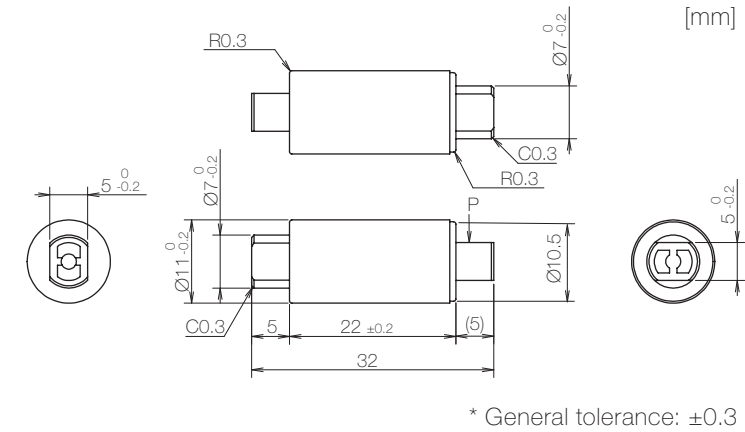
Test mode [110° → 70° (Pause) → (Free fall with damping) → 0°]
 * Horizontal plane: 0°



Inspection specification before shipping

| Type | Preset torque [N·m] (lb·in) | Closing time |
|------|-----------------------------|--------------|
| 0.5K | 0.05 (0.44) | 2 to 10 sec |
| 0.8K | 0.08 (0.71) | |
| 1K | 0.10 (0.89) | |
| 2K | 0.20 (1.77) | 5 to 15 sec |
| 3K | 0.29 (2.57) | |

Product information

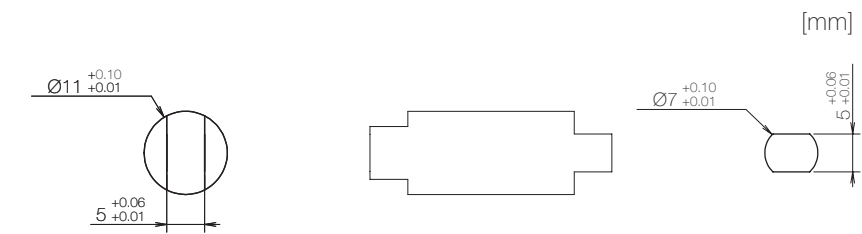


- Opening angle: 110°
- Product weight: Approx. 3 g
- Allowable radial load (P): 29.4 N

Main materials

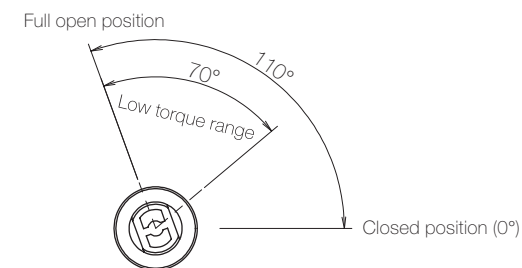
| | |
|---------|---------------|
| Housing | Plastic (POM) |
| Cap | Plastic (POM) |
| Shaft | Plastic (POM) |

Dimensions related to mounting

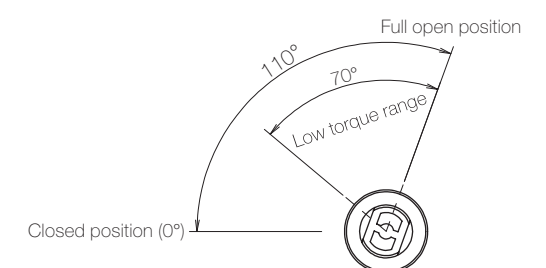


Opening angle

TD73A



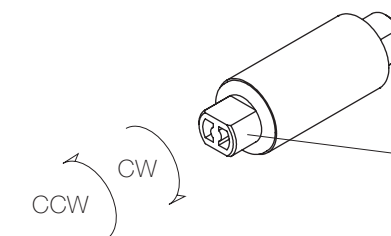
TD73B



* Shaft position at the time of shipping: Closed position

Damping directions

Rotation directions of the shaft to which torque is applied



* Housing secured / Shaft rotatable

| | |
|-------------------|-------------|
| Damping direction | Shaft color |
| CW | Natural |
| CCW | Gray |