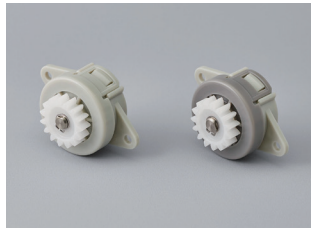
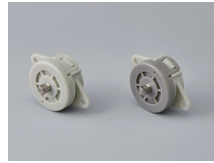


## Product lineup



Product image



TD62(G-L)



TD62W



TD62W(G-L)

### Features

- Middle torque range of our continuous rotation dampers
- Outer mounting diameter of  $\varnothing 25$  mm
- Facilitates easy centering during mounting
- A wide variety of torques

Product name	Torque [mN·m] (lbf·in)	Damping direction	Cap color
TD62R1-300	$30.0 \pm 9$ (0.27 $\pm$ 0.08)	CW	Dark gray
TD62R1-600	$60.0 \pm 15$ (0.53 $\pm$ 0.13)		
TD62R1-900	$90.0 \pm 18$ (0.80 $\pm$ 0.16)		
TD62R1-1500	$150.0 \pm 30$ (1.33 $\pm$ 0.27)		
TD62R1-2000	$200.0 \pm 40$ (1.77 $\pm$ 0.35)		

Product name	Torque [mN·m] (lbf·in)	Damping direction	Cap color
TD62L1-300	$30.0 \pm 9$ (0.27 $\pm$ 0.08)	CCW	Gray
TD62L1-600	$60.0 \pm 15$ (0.53 $\pm$ 0.13)		
TD62L1-900	$90.0 \pm 18$ (0.80 $\pm$ 0.16)		
TD62L1-1500	$150.0 \pm 30$ (1.33 $\pm$ 0.27)		
TD62L1-2000	$200.0 \pm 40$ (1.77 $\pm$ 0.35)		

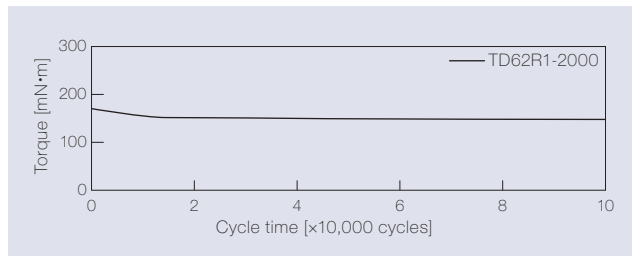
The torque of all rotary dampers is measured at a rotational speed of 30 min<sup>-1</sup>.

The products without gear have "(G-L)" at the end of the product name.

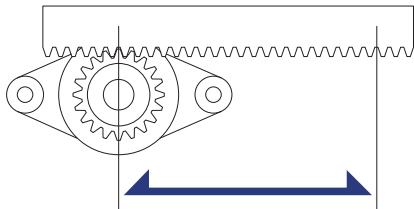
Bidirectional type products have "W" instead of "R" (or "L" ) in their names.

## Product specifications

### Durability

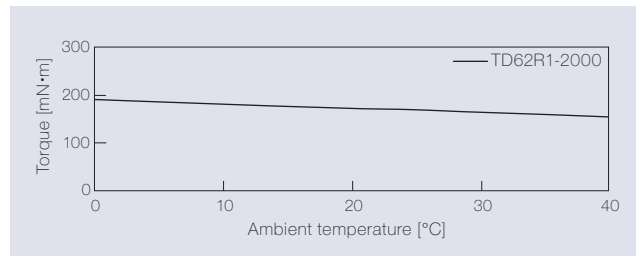


Measurement of torque at a rotation speed of 30 min<sup>-1</sup>



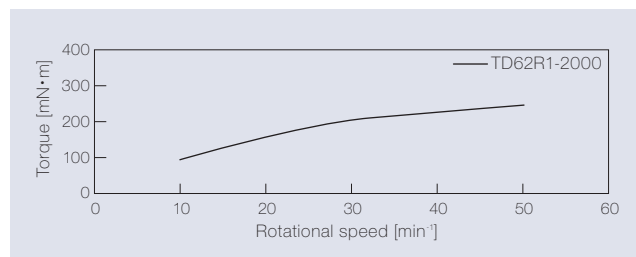
Test method	Rack-and-pinion
Travel speed	24 mm / sec
Pinion rotation speed	30 min <sup>-1</sup>
Damper rotation frequency	One rotation in the CW and CCW directions, respectively
Durability	100,000 cycles

### Temperature characteristics



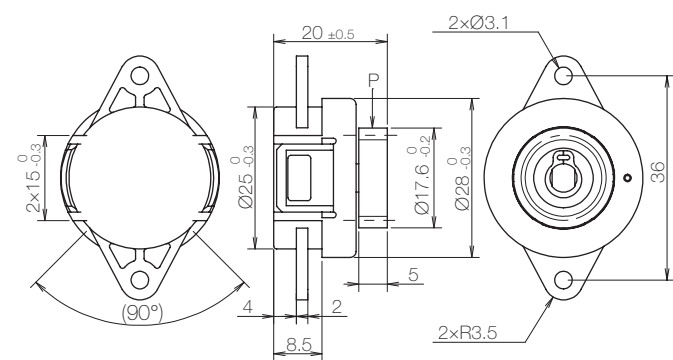
The torque achieved during rotation at 30 min<sup>-1</sup> in the designated ambient temperature is shown.

### Speed characteristics

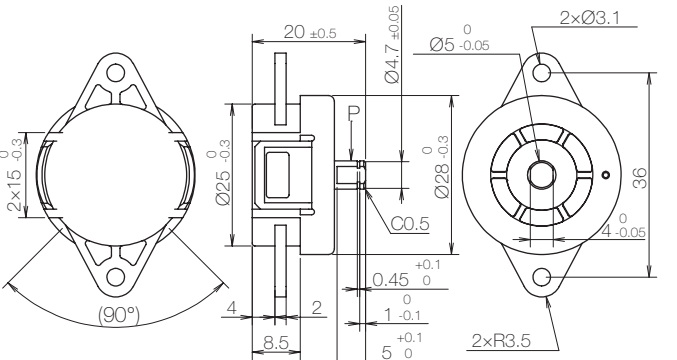


## Product information

### TD62



### TD62 (G-L)



\* The dimensions of the shaft of bidirectional type products are different from the one shown in the catalog. Please contact us.

\* General tolerance:  $\pm 0.3$

### Gear specifications

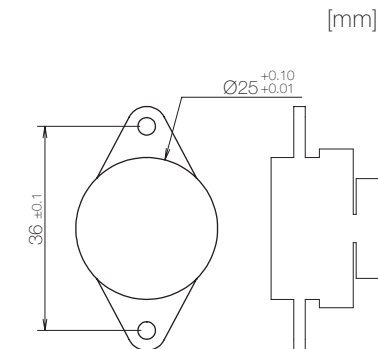
Type	Standard spur gear
Tooth profile	Involute and full depth tooth
Module	1
Pressure angle	20°
Number of teeth	15
P.C.D[mm]	$\varnothing 15$
Addendum modification	+0.3
Base tangent length/Number	4.84 / 2

- Product weight: Approx. 15 g (With gear)
- Allowable radial load (P): 13.4 N

### Main materials

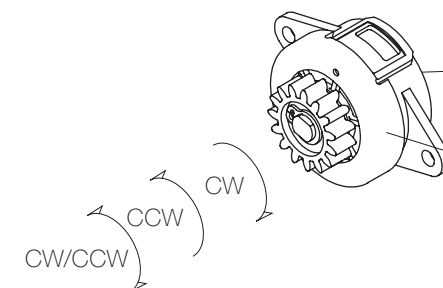
Housing		Plastic (POM)
Cap		Plastic (POM)
Gear		Plastic (POM)
Shaft	CW	Stainless steel (SUS)
	CCW	
	Bidirectional	

## Dimensions related to mounting



## Damping directions

### Damping direction of the shaft



Damping direction	Printed mark
CW	R
CCW	L
Bidirectional	W

Damping direction	Cap color
CW	Dark gray
CCW	Gray
Bidirectional	Dark gray