

Torque adjustment function



Torque adjustment slot

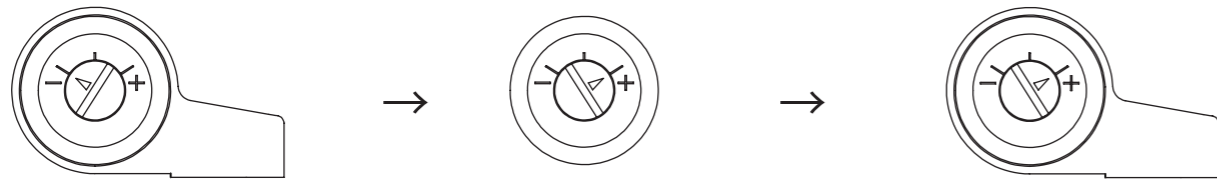


Enlarged view

As the torque of the rotary damper is adjustable, it is not necessary to obtain the products with various torques according to the application to be used. The torque can be adjusted simply by turning the slot of the rotary damper with a flathead screwdriver. Since the torque adjustment range can be more than doubled, the same rotary damper is applicable to both an application of 0.49 N·m and an application of 1.27 N·m. Adjusting the torque makes coping with fine feeling and variation in an application possible.

Torque adjustment method

When increasing the torque

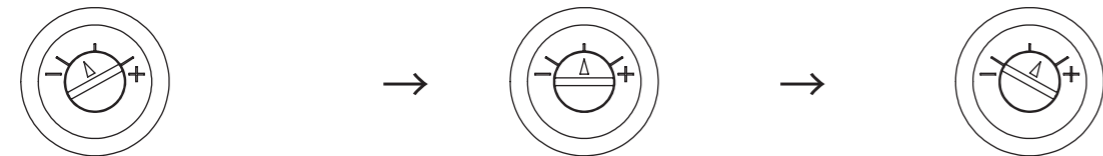


5/13K : 0.49N·m (4.34 lbf·in)
10/20K : 0.98N·m (8.67 lbf·in)

Rotate in the + (plus) direction

5/13K : 1.27N·m (11.24 lbf·in)
10/20K : 1.96N·m (17.35 lbf·in)

Adjustment position

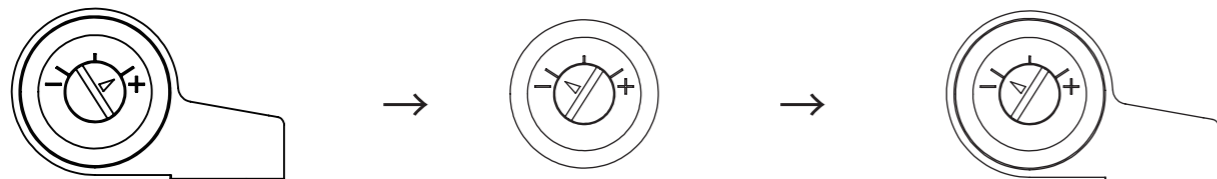


5/13K : 0.69N·m (6.11 lbf·in)
10/20K : 1.22N·m (10.80 lbf·in)

5/13K : 0.88N·m (7.79 lbf·in)
10/20K : 1.47N·m (13.01 lbf·in)

5/13K : 1.08N·m (9.56 lbf·in)
10/20K : 1.72N·m (15.22 lbf·in)

When decreasing the torque

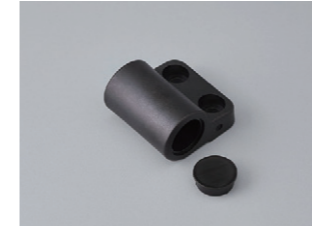


5/13K : 1.27N·m (11.24 lbf·in)
10/20K : 1.96N·m (17.35 lbf·in)

Rotate in the - (minus) direction

5/13K : 0.49N·m (4.34 lbf·in)
10/20K : 0.98N·m (8.67 lbf·in)

Product lineup

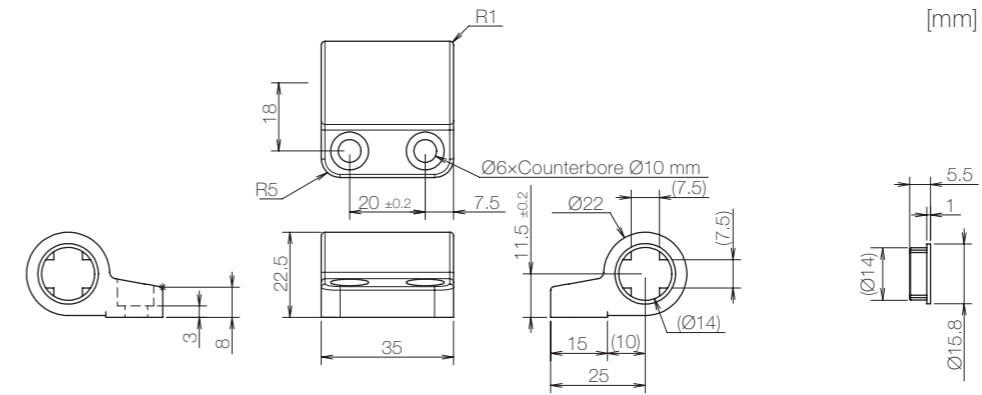


TD27/28 Bracket

Combining TD27/28 with an optional bracket enables the use of this product as a rotary damper hinge. It can be attached easily, and the shape of the rotary damper hinge can be changed depending on the method of mounting the bracket. And the cap of the bracket is detachable and can be used for either side. (It's best to minimize the number of times of detaching the cap)

Product name
TD27/28 Bracket

Product information



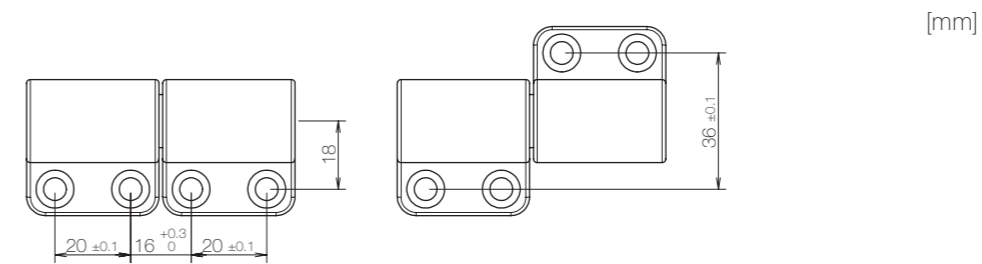
- Product weight: Approx. 15 g

Main materials

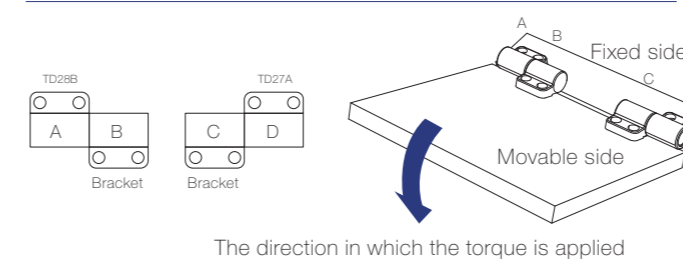
Housing	Plastic (PBT)
Cap	Plastic (PBT)

* General tolerance: ±0.3

Dimensions related to mounting



Combination of the products that are mounted outside



Combination of the products that are mounted inside

