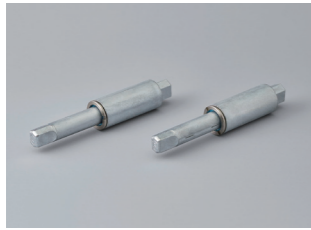
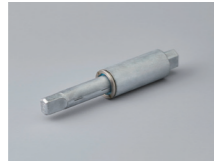


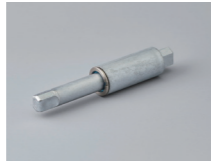
## Product lineup



Product image



TD22A



TD22B

### Features

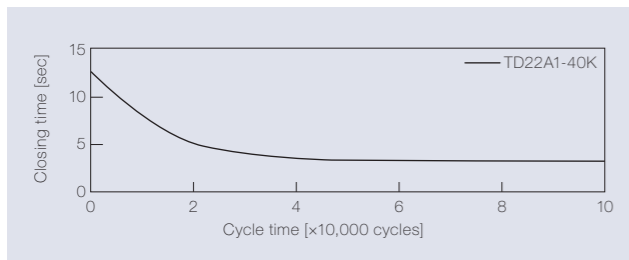
- Slim design with long mounting shaft
- Outer diameter of  $\varnothing 16.2$  mm
- High torque (Up to 4 N·m)
- Durable for 100,000 cycles
- Wide temperature range for operation (-10°C to 40°C)

Product name	Torque [N·m] (lbf·in)	Damping direction
TD22A1-25K	2.45 (21.68)	CW
TD22A1-35K	3.43 (30.36)	
TD22A1-40K	3.92 (34.69)	

Product name	Torque [N·m] (lbf·in)	Damping direction
TD22B1-25K	2.45 (21.68)	CCW
TD22B1-35K	3.43 (30.36)	
TD22B1-40K	3.92 (34.69)	

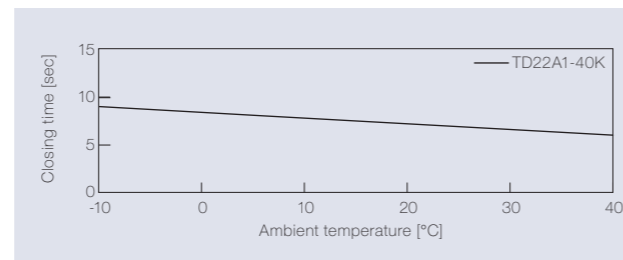
## Product specifications

### Durability



Torque	3.92 N·m (34.69 lbf·in)
Radial load	N/A
Angle range of closing time	70 to 0 deg.
Temperature	23 ± 2°C (73.4 ± 35.6°F)
Durability	100,000 cycles

### Temperature characteristics



Measured according to the performance management testing method shown below after leaving in each designated ambient temperature for over one hour.

### Performance management testing method

As the torque of partial rotation angle dampers is not consistent, the closing time measurement jig is used for the performance tests.

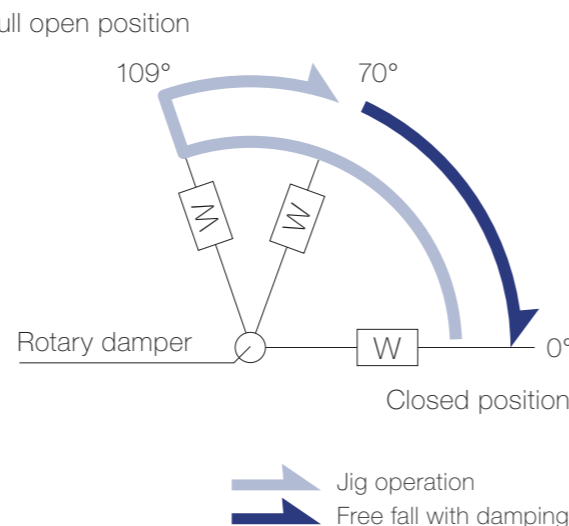
[Operation during measurement]

(Secures the housing of a rotary damper and moves its shaft)

All rotary dampers are managed by the following closing time test.

Test mode [109° → 70° (Pause) → (Free fall with damping) → 0°]

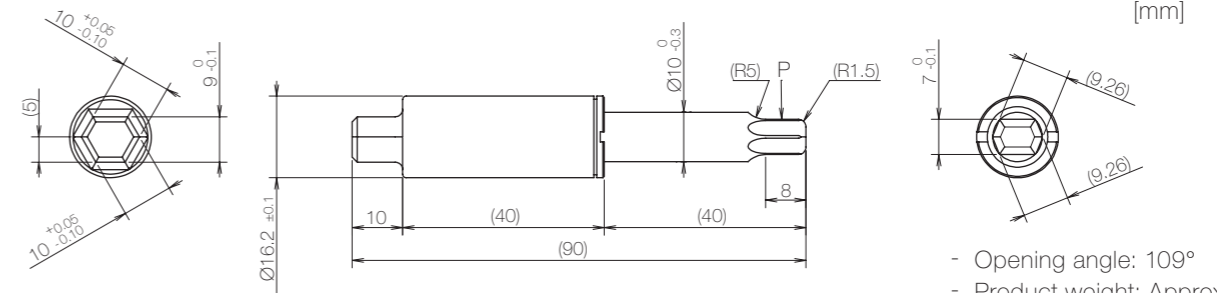
\* Horizontal plane: 0°



### Inspection specification before shipping

Type	Preset torque [N·m] (lbf·in)	Closing time
25K	2.45 (21.68)	4 to 18 sec
35K	3.43 (30.36)	
40K	3.92 (34.69)	

## Product information



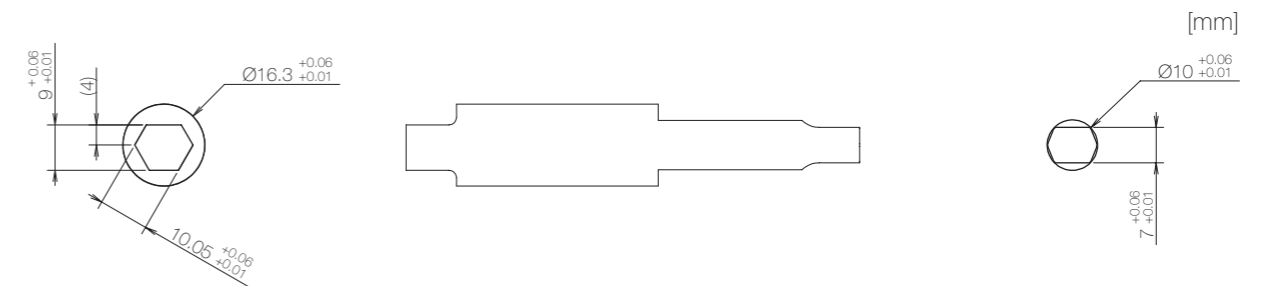
- Opening angle: 109°
- Product weight: Approx. 65 g
- Allowable radial load (P): 19.6 N

### Main materials

Housing	Zinc alloy (ZDC)
Ring screw	Stainless steel (SUS)
Shaft	Zinc alloy (ZDC)

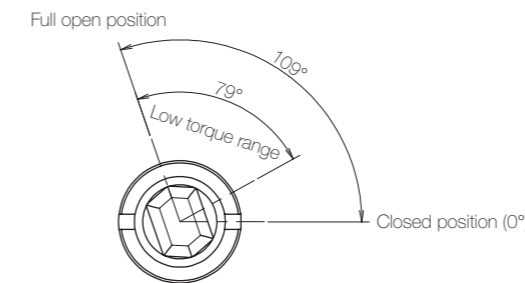
\* General tolerance: ±0.2

## Dimensions related to mounting

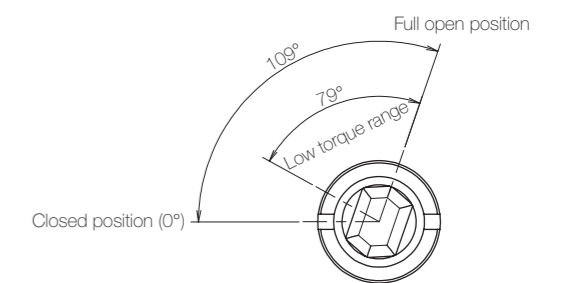


## Opening angle

### TD22A



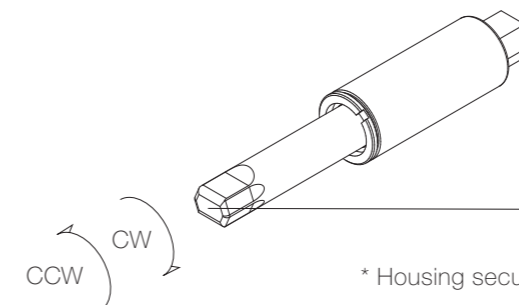
### TD22B



\* Shaft position at the time of shipping: Closed position

## Damping directions

### Rotation directions of the shaft to which torque is applied



\* Housing secured / Shaft rotatable

Damping direction	Engraved mark
CW	R
CCW	L