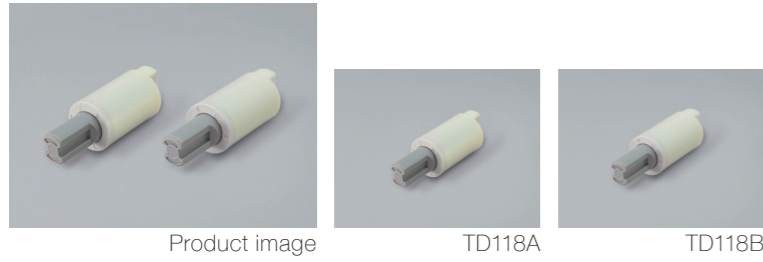


Product lineup



Features

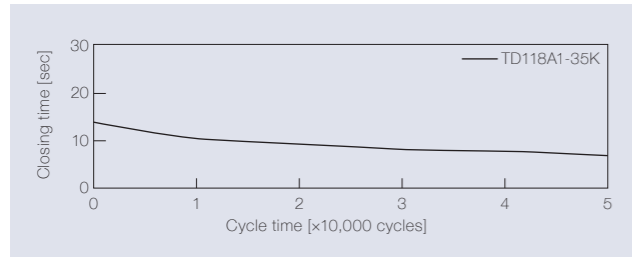
- The products with the highest torque (3.5 N·m) among our plastic rotary dampers
- Outer diameter of $\varnothing 19$ mm

Product name	Torque [N·m] (lbf·in)	Damping direction
TD118A1-15K	1.5 (13.28)	CW
TD118A1-20K	2.0 (17.70)	
TD118A1-25K	2.5 (22.13)	
TD118A1-30K	3.0 (26.55)	
TD118A1-35K	3.5 (30.98)	

Product name	Torque [N·m] (lbf·in)	Damping direction
TD118B1-15K	1.5 (13.28)	CCW
TD118B1-20K	2.0 (17.70)	
TD118B1-25K	2.5 (22.13)	
TD118B1-30K	3.0 (26.55)	
TD118B1-35K	3.5 (30.98)	

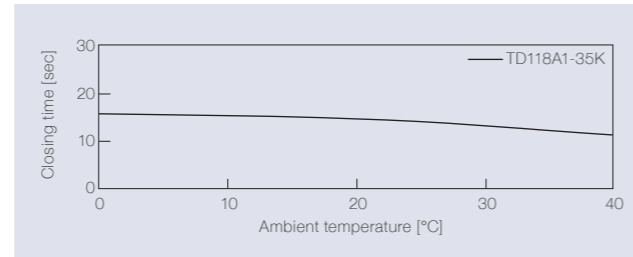
Product specifications

Durability



Torque	3.5 N·m (30.98 lbf·in)
Radial load	N/A
Angle range of closing time	70 to 0 deg.
Temperature	23 \pm 2°C (73.4 \pm 35.6°F)
Durability	50,000 cycles

Temperature characteristics



Measured according to the performance management testing method shown below after leaving in each designated ambient temperature for over one hour.

Performance management testing method

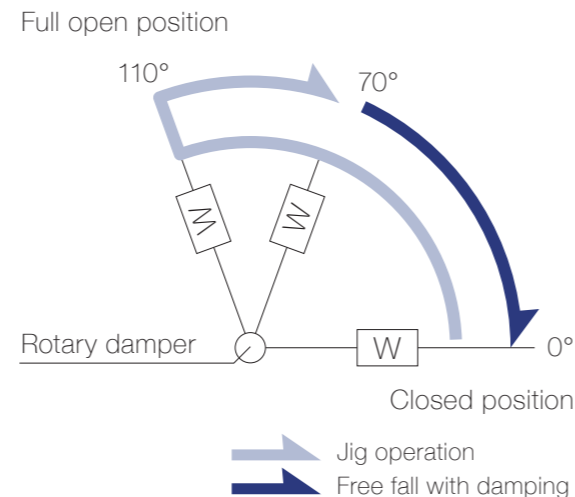
As the torque of partial rotation angle dampers is not consistent, the closing time measurement jig is used for the performance tests.

[Operation during measurement]
(Secures the housing of a rotary damper and moves its shaft)
All rotary dampers are managed by the following closing time test.

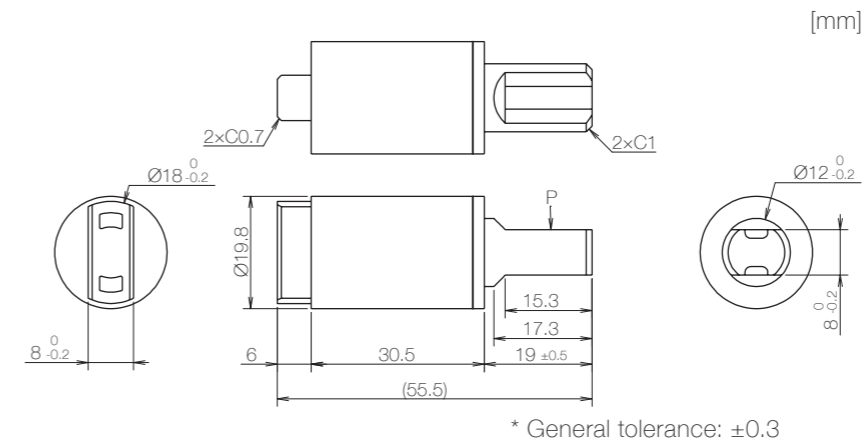
Test mode [110° \rightarrow 70° (Pause) \rightarrow (Free fall with damping) \rightarrow 0°]
* Horizontal plane: 0°

Inspection specification before shipping

Type	Preset torque [N·m](lbf·in)	Closing time
15K	1.5 (13.28)	6 to 20 sec
20K	2.0 (17.70)	
25K	2.5 (22.13)	
30K	3.0 (26.55)	
35K	3.5 (30.98)	



Product information

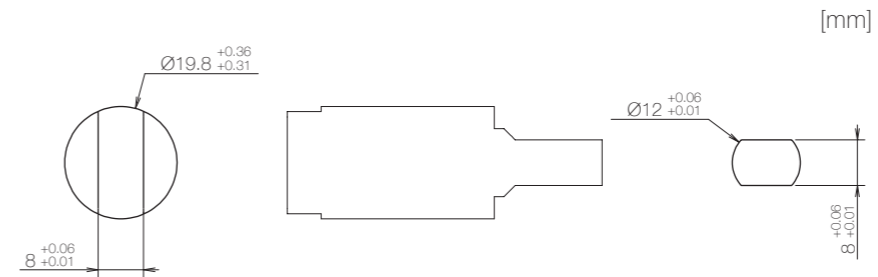


- Opening angle: 110°
- Product weight: Approx. 16 g
- Allowable radial load (P): 19.6 N

Main materials

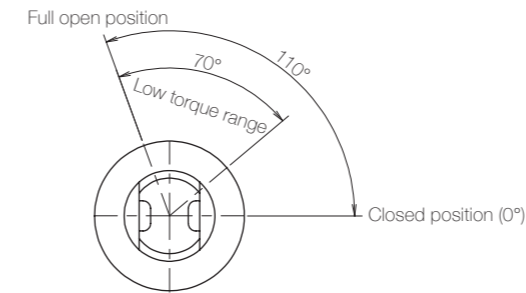
Housing	Plastic (PBT)
Cap	Plastic (PBT)
Shaft	Plastic (PA)

Dimensions related to mounting

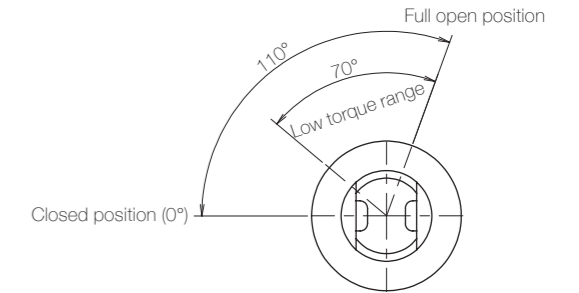


Opening angle

TD118A



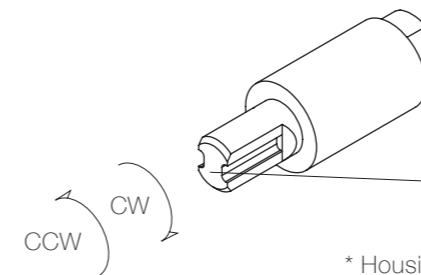
TD118B



* Shaft position at the time of shipping: Closed position

Damping directions

Rotation directions of the shaft to which torque is applied



* Housing secured / Shaft rotatable

Damping direction	Engraved mark
CW	CW
CCW	CCW