

Product lineup



Product image

Features

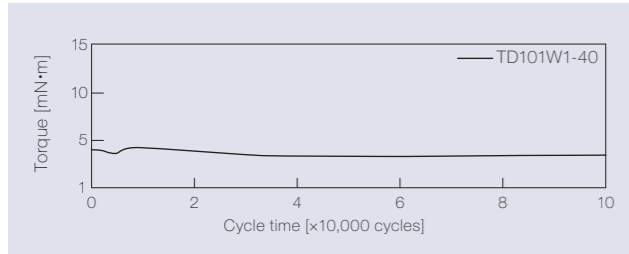
- Outer product diameter of $\varnothing 6$ mm (Ultra compact)
- Bidirectional rotary damper
- Made with impact-resistant polycarbonate (PC) plastic
- Due to its gray color, the product is inconspicuous after mounting

| Product name | Torque [mN·m] (lbf·in) | Damping direction |
|--------------|-----------------------------------|-------------------|
| TD101W1-25 | $2.5^{+1.3}_{-0.8}$ (0.02 ± 0.01) | Bidirectional |
| TD101W1-40 | 4.0 ± 2.2 (0.04 ± 0.02) | |

The torque of all rotary dampers is measured at a rotational speed of 30 min⁻¹.
One direction rotary dampers are not available.

Product specifications

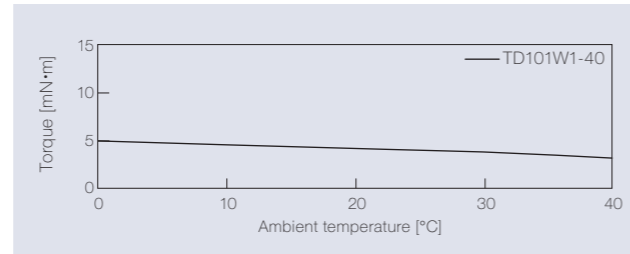
Durability



Measurement of torque at a rotation speed of 30 min⁻¹

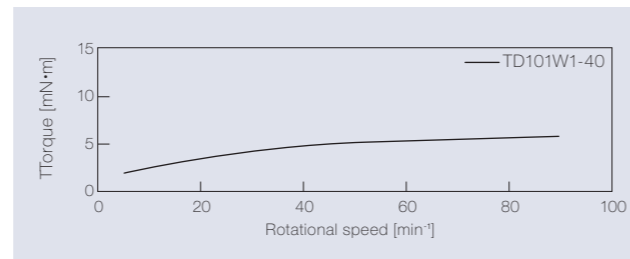
| Test method | CW & CCW rotation test |
|---------------------------|---|
| Operation mode | Rotation in the CW direction for 2 seconds → Suspension for 1 second → Rotation in the CCW direction for 2 seconds → Suspension for 1 second |
| Rotation speed | 30 min ⁻¹ |
| Damper rotation frequency | One rotation in the CW and CCW directions, respectively |
| Durability | 100,000 cycles |

Temperature characteristics



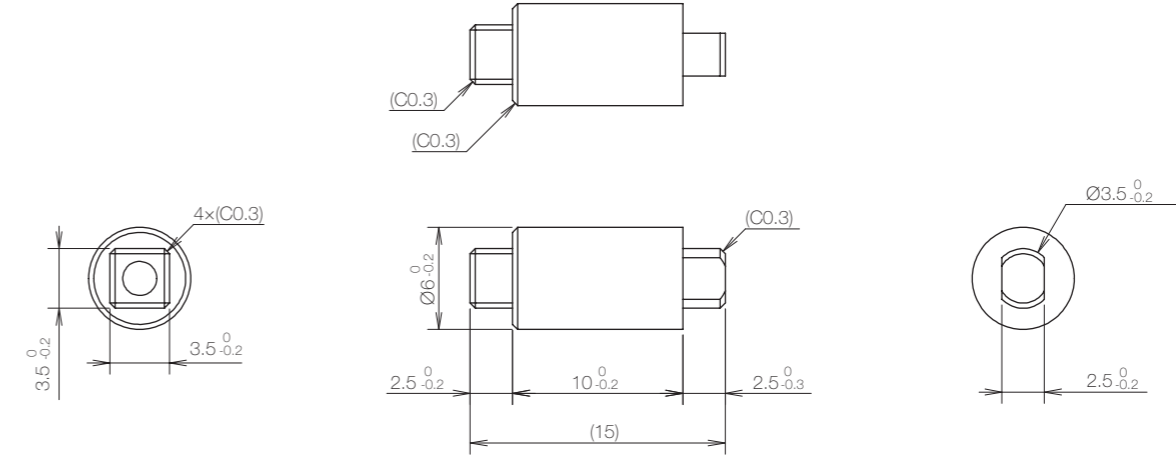
The torque achieved during rotation at 30 min⁻¹ in the designated ambient temperature is shown.

Speed characteristics



Product information

[mm]



* General tolerance: ±0.3

- Product weight: Approx. 0.5 g

Main materials

| | |
|---------|--------------|
| Housing | Plastic (PC) |
| Shaft | Plastic (PC) |

Dimensions related to mounting

[mm]

